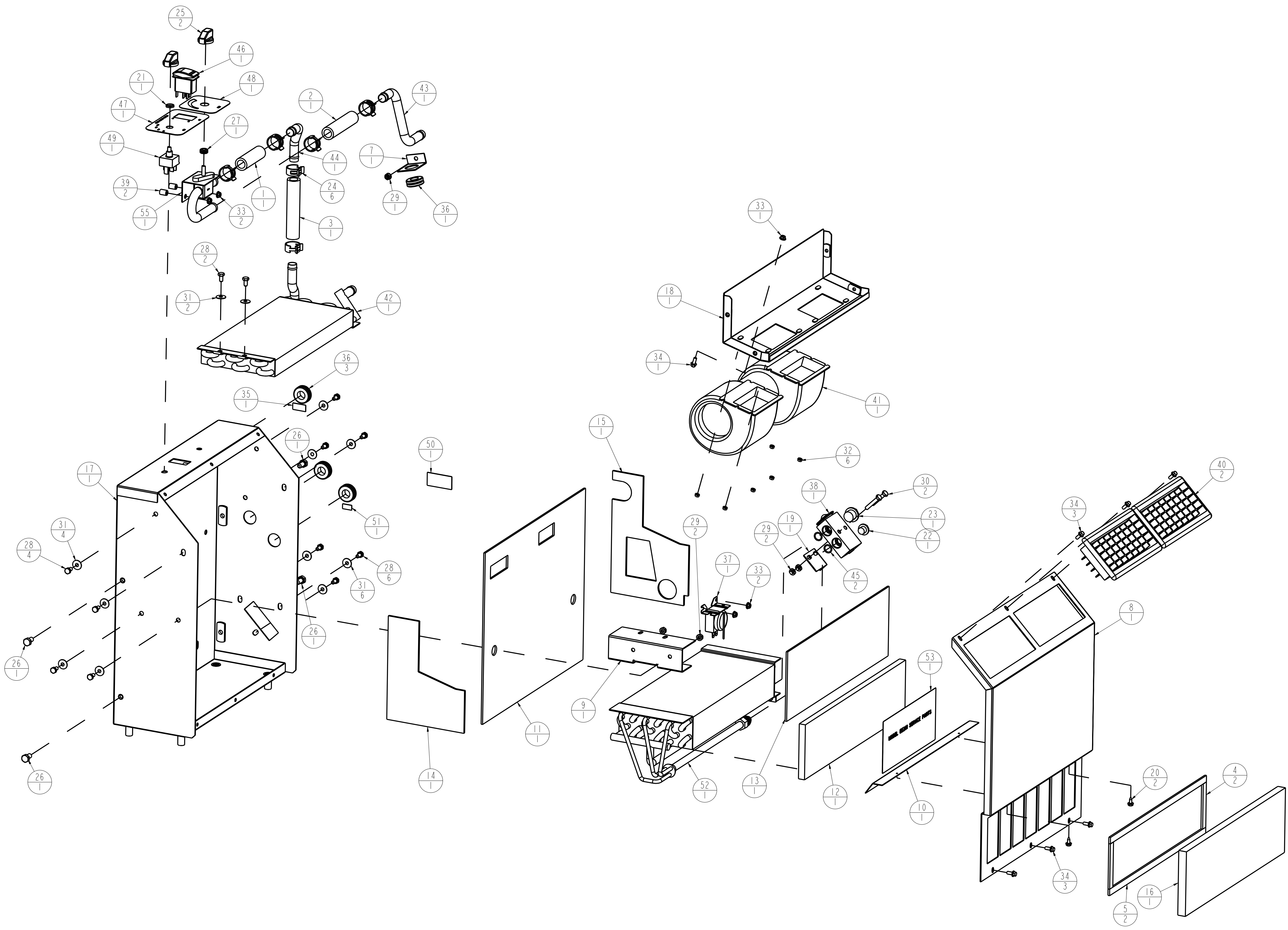


The subject matter shown and described in this drawing and any other information disclosed in connection therewith is to be held in strict confidence. All rights in any designs, inventions, trademarks, and copyrights disclosed are reserved to JBAR A/C, INC.

REVISIONS						
REV	ZONE	DESCRIPTION	DWN	APP	DATE	PCN
A		RELEASE FOR PRODUCTION	BLS		19MAR03	J-1046
B		SEVERAL CHANGES - SEE PCN	BLS		26MAR03	J-1055
C		MOVE 406202 DRAINS TO 203120 DELETE (4) 405863 O-RINGS	BLS		02AUG04	J-1124



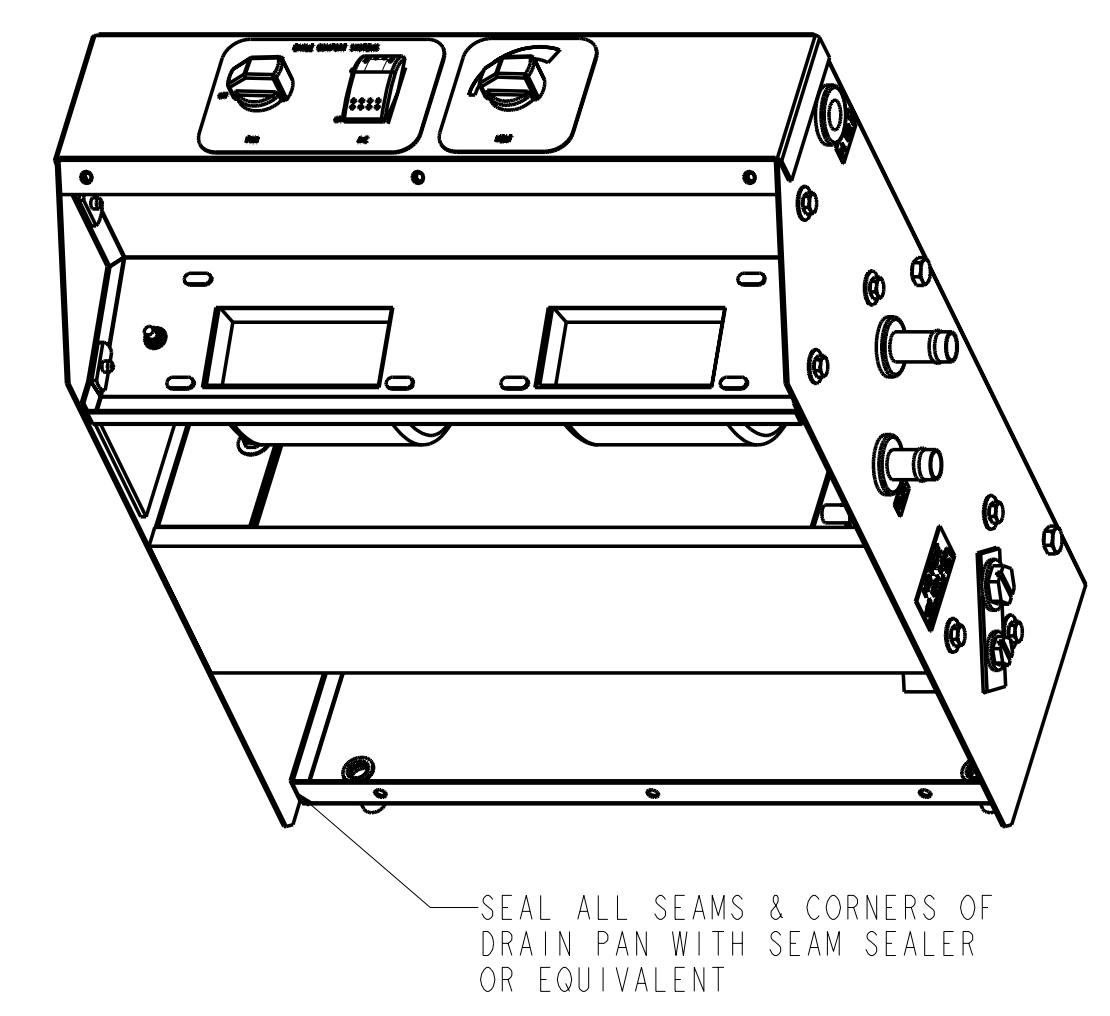
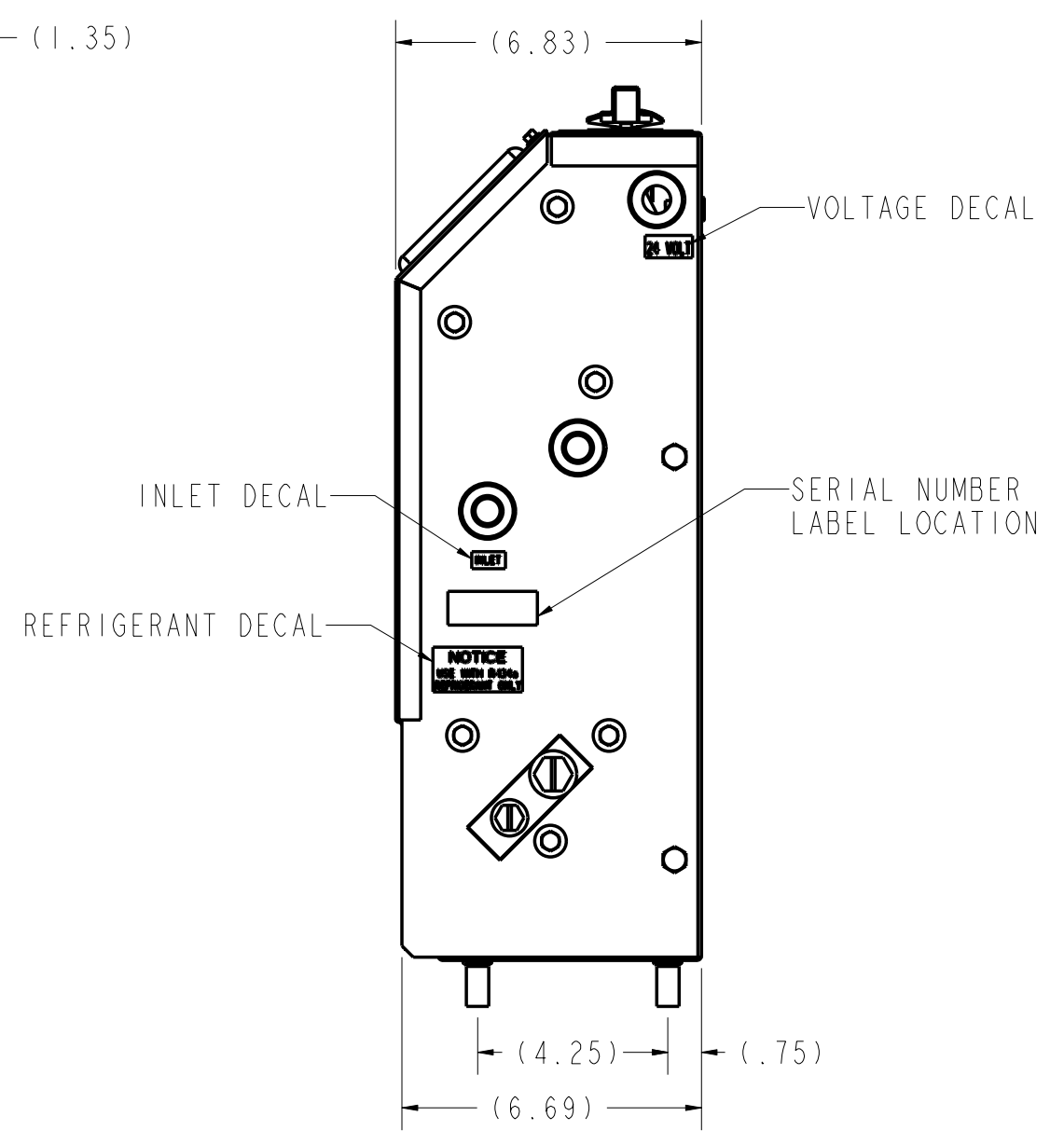
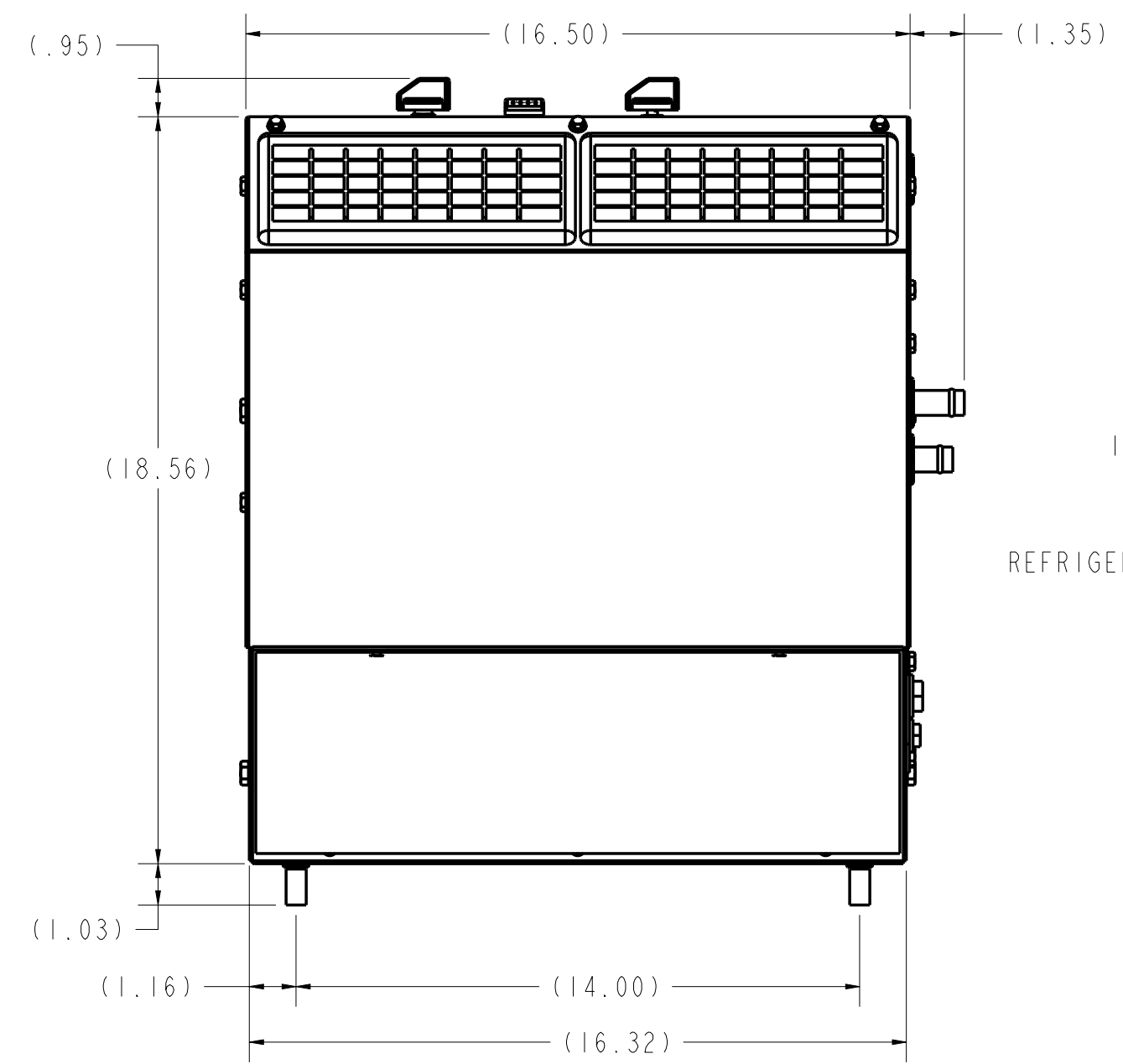
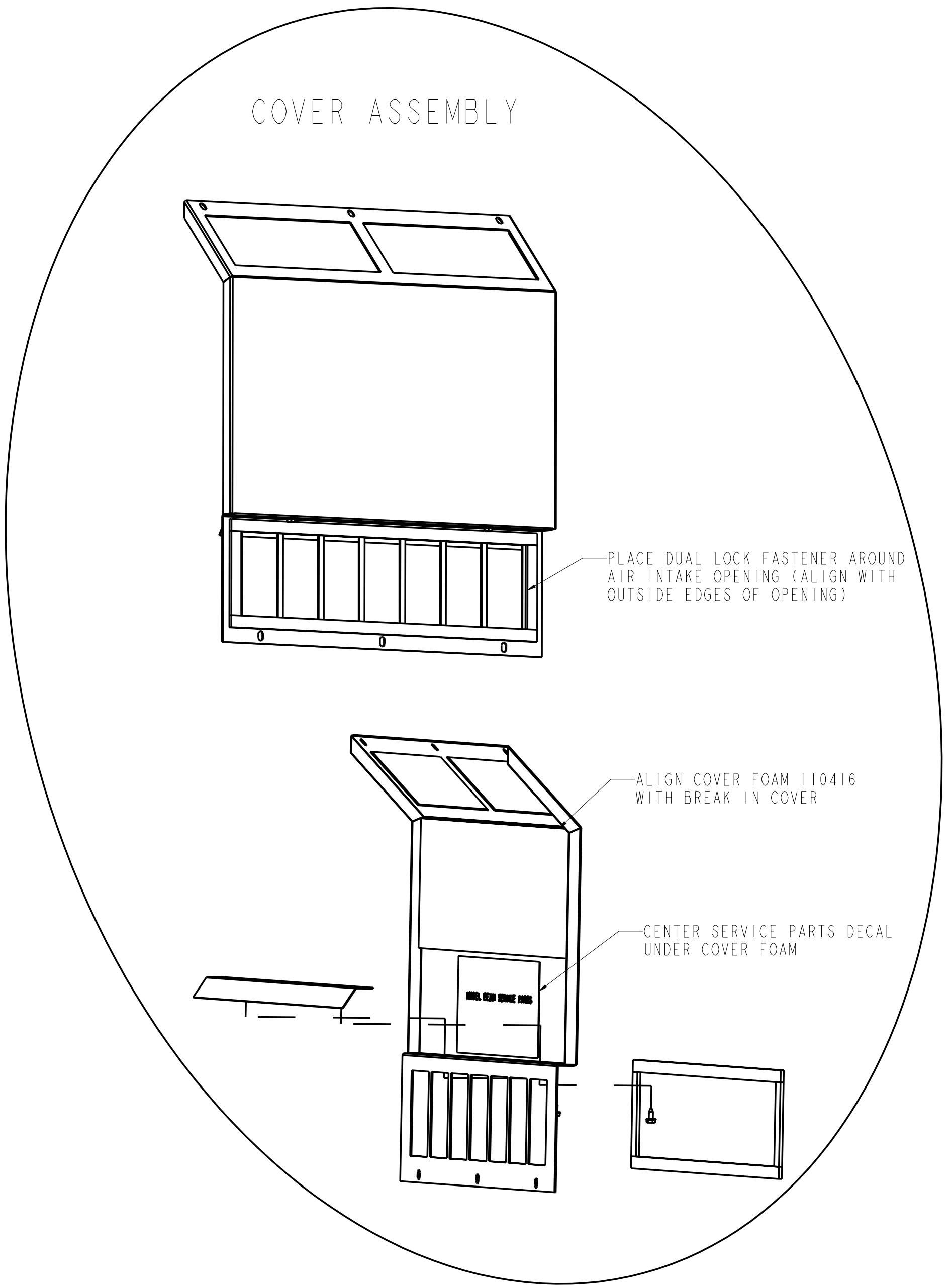
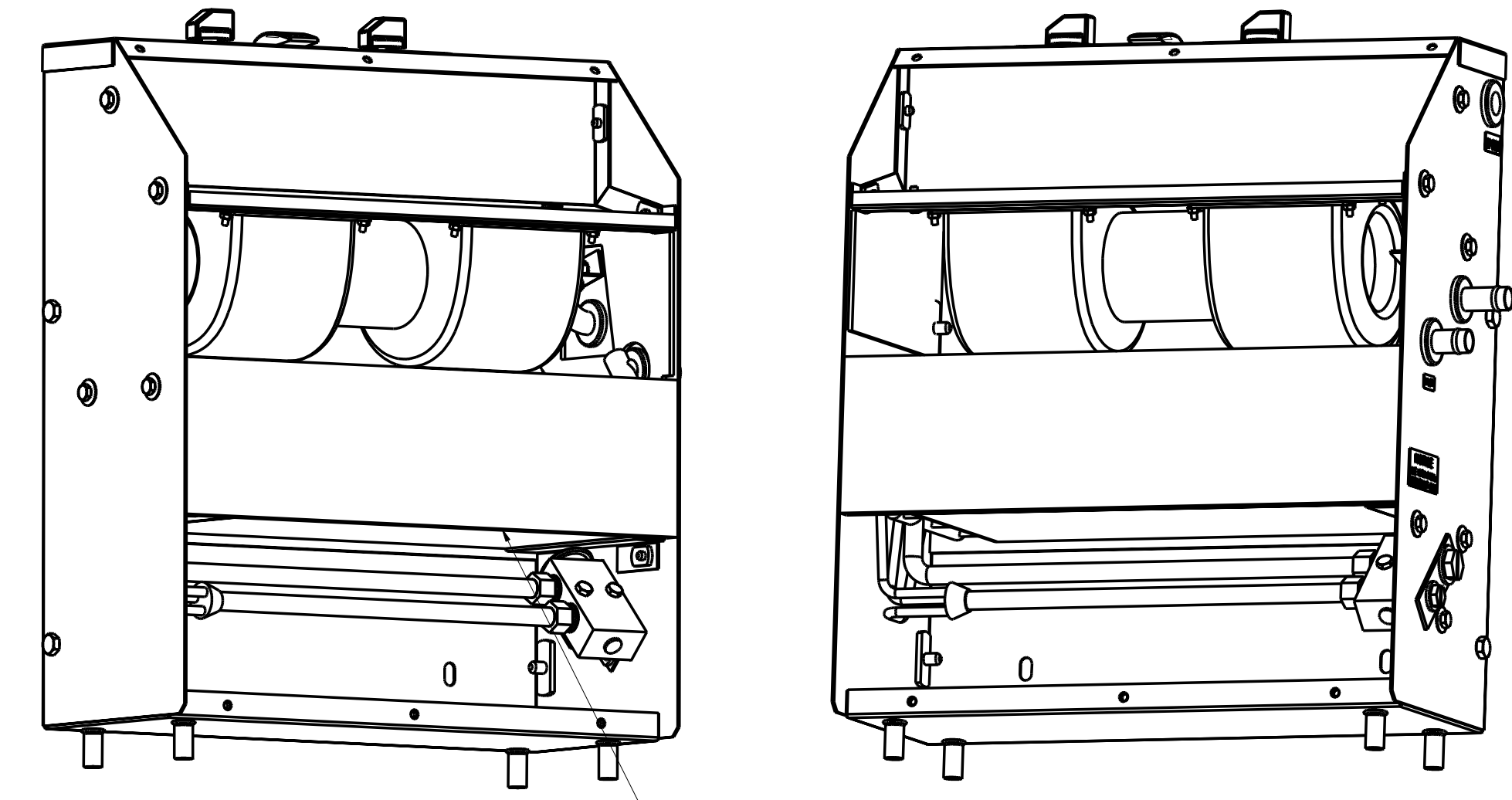
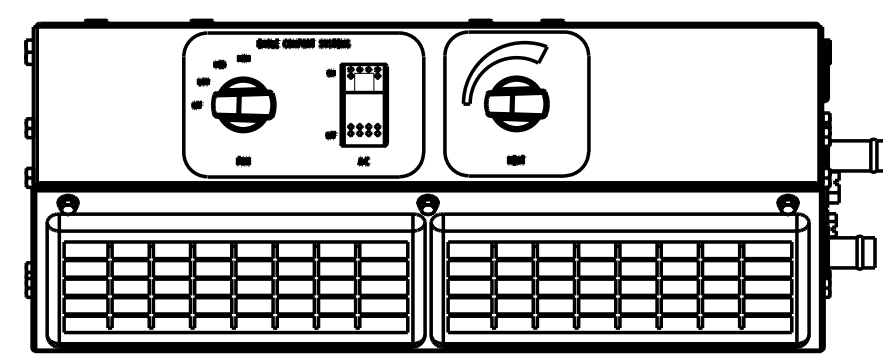
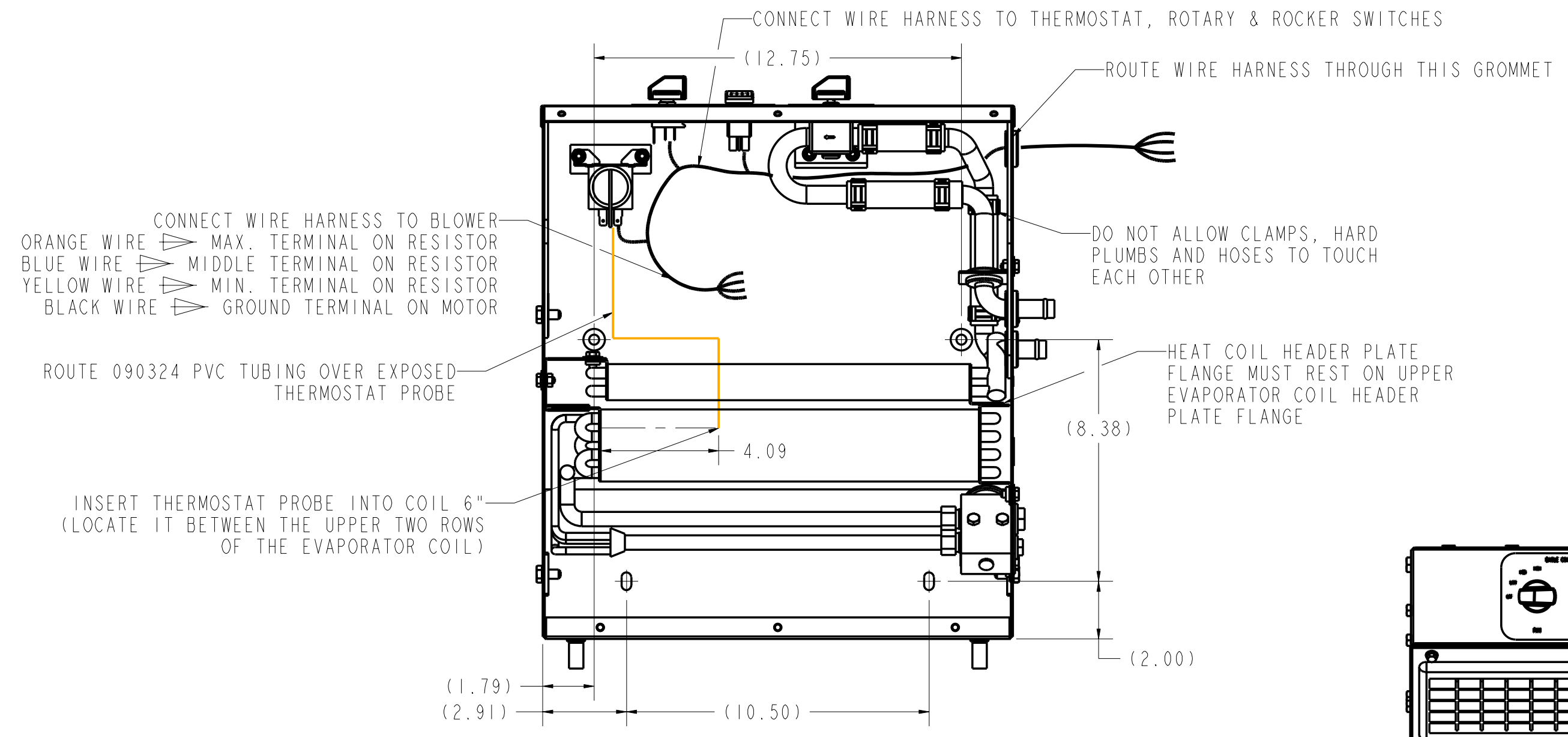
\* ITEMS NOT SHOWN

ITEM	PART NO	QTY	QTY/PC	DESCRIPTION
* 56	470450	- 1		PARTS BAG,MODEL EE201 AM
55	450748	- 1		VALVE,HEAT,405855 W/ SHORT STEM,EE200
* 54	420329	- 1		WIRE HARNESS,MODEL EE201 SIDEWALL
53	406374	- 1		DECAL,SERVICE PARTS,MODEL EE200
52	406345	- 1		COIL, EVAP,MODEL EE200
51	405895	- 1		DECAL, "INLET"
50	405894	- 1		DECAL, "NOTICE, R134a REFRIGERANT ONLY"
49	405875	- 1		SWITCH,ROTARY,FAN(S POST,3 SP),12V(25A)
48	405874	- 1		DECAL,CONTROLS,HEAT,MODEL EE200
47	405873	- 1		DECAL,CONTROLS,FAN&A/C,MODEL EE200
46	405868	- 1		SWITCH,ROCKER,A/C,ON/OFF,24V
45	405863	- 2		O-RING,#8,HNBR,GREEN,.426X.070
44	405853	- 1		HARD PLUMB,HT,5/8,90,BD/BD
43	405852	- 1		HARD PLUMB,HT,5/8,STJ,BLKHD/BD
42	405851	- 1		COIL, HEAT, MODEL EE200
41	405842	- 1		BLOWER ASSY, SPAL 008-B45-02,W/RESTR,24V
40	405787	- 2		LOUVER,RECTANGULAR,3.82 X 7.87
39	405760	- 2		SPACER,NYLON,0.194 1D X .375 OD X .50 LG
38	405017	- 1		VALVE - BLOCK TXV, R134a, 1.5 TON
37	404968	- 1		SWITCH,THERMOSTAT,PRESET,21" P,31,5/36.5
36	402336	- 4		GROMMET,RBR,1.00H,1.300D,0.62ID,0.09GV
35	402308	- 1		DECAL, 24V
34	301448	- 7		HHFS,MOSKO,BOX 12,W/O SERR,BLACK OXIDE
33	301426	- 5		NUT,HEX FLANGED,MOSKO,80,ZINC PLATED
32	301418	- 6		NUT,HEX,KEPS,M04X0.70,ZP
31	301408	- 12		WASHER,BELLEVILLE,M06,BLACK OXIDE
30	301403	- 2		SCREW,M06X1.00X.35,HEX HEAD,CAP,ZNC+CLR
29	301401	- 5		NUT,HEX,KEPS,M06X1.00,ZINC+CLEAR
28	301399	- 12		SCREW,M06X1.00X.12,HEX HEAD,CAP,BLK OX
27	301397	- 1		GROMMET,RBR,0.38H,0.560D,0.28ID,0.06GV
26	301374	- 4		SCR,DM08X1.25X.16,HHC,MCN,SS
25	301337	- 2		KNOB, POINTER PUSH ON, 1/4 D SPR, INDX 1
24	301159	- 6		CLAMP,HOSE,5/8"-CONSTANT PRESSURE
23	300901	- 1		PLUG, 1/2 O-RING PORT, 7/8-14 THD
22	300899	- 1		PLUG, 5/16 O-RING PORT, 5/8-18 THD
21	300701	- 1		NUT,PANEL,7/16-28 UNEF
20	300513	- 2		SCREW,#10 X 1/2",TAB,HWH,BLK OX
19	203129	- 1		WELD,BRKT,TVX MOUNT,"L" W/ WELDNUT
18	203121	- 1		WELD,BRKT,MODEL EE201,BLOWER MOUNT
17	203120	- 1		WELD,HSG,MODEL EE201,MAIN
16	110497	- 1		FOAM,PES 4.1005(30PP1),5/8" X 5.0 X16.00
15	110418	- 1		FOAM,MODEL EE200,BOX RIGHT SIDE
14	110417	- 1		FOAM,MODEL EE200,BOX LEFT SIDE
13	110416	- 1		FOAM,MODEL EE200,COVER
12	110415	- 1		FOAM,MODEL EE200,COIL SEAL
11	110414	- 1		FOAM,MODEL EE201,BOX REAR
10	103005	- 1		S.M.BRKT,MODEL EE201,WATER DEFLECTOR
9	102998	- 1		S.M.BRKT,COIL SUPPORT,MODEL EE201
8	102993	- 1		S.M.HSG,MODEL EE201,COVER(FRONT)
7	102992	- 1		S.M.BRKT,MODEL EE201,HARD PLUMB SUPPORT
* 6	090324	- 1	1.25 FT	TUBING, PVC, 1.21D X .06 WALL, BULK
5	090239	- 2	15.50 IN	FASTENER,DUAL LOK,ADH,3M SJ-3552,1/2" W
4	090239	- 2	3.50 IN	FASTENER,DUAL LOK,ADH,3M SJ-3552,1/2" W
3	090016	- 1	4.5 IN	HOSE,HTR,5/8 ID,(4.5 in)
2	090016	- 1	4.0 IN	HOSE,HTR,5/8 ID,(4.0 in)
1	090016	- 1	3.0 IN	HOSE,HTR,5/8 ID,(3.0 in)

SPEC CHAR SYMBOLS CRITICAL SIGNIFICANT REFERENCE		UNITS: INCHES [mm]	INTERPRET IN ACCORDANCE WITH ANSI Y14.5-1982	TITLE <b>JBAR A/C INC.</b> Cleveland, Ohio USA	
THIRD ANGLE PROJECTION		UNLESS OTHERWISE SPECIFIED DIMENSIONS TOLERANCES ARE: FRACTIONS DECIMALS ANGLES XX ± .003 XX ± .010 XX ± .010		MODEL EE201 SIDEWALL, 24V, HVAC	
REF:	DWN: BLS	DATE: 26MAR03	SIZE: D	MATERIAL:	DWG NO: EE201-1-24
PROJ #: JEK107	ENG:	DATE:	CAD: PFA/ENGINEER	SCALE: 0.250	SHEET 1 OF 2
PROJ: MODEL EE201	MGR:	DATE:			

The subject matter shown and described in this drawing and any other information contained in connection therewith is to be held in strict confidence. All rights to any designs, inventions, trademarks, and copyrights disclosed are reserved to JBAR A/C, INC.

REVISIONS						
REV	ZONE	DESCRIPTION	DWN	APP	DATE	PCN
A		RELEASE FOR PRODUCTION	BLS		19MAR03	J-1046
B		SEVERAL CHANGES - SEE PCN	BLS		26MAR03	J-1055
C		SEE PAGE 1	BLS		02AUG04	J-1124



SPEC CHAR SYMBOLS		UNITS: INCHES [mm]	INTERPRET IN ACCORDANCE WITH ANSI Y14.5-1982	JBAR A/C INC. Cleveland, Ohio USA	
CRITICAL SIGNIFICANT REFERENCE				TITLE	
THIRD ANGLE PROJECTION		UNLESS OTHERWISE SPECIFIED DIMENSIONS TOLERANCES ARE: FRACTIONS DECIMALS ANGLES		MODEL EE201 SIDEWALL, 24V, HVAC	
REF:	DWN: BLS	DATE: 26MAR03	SIZE: D	MATERIAL:	DWG NO: EE201-1-24
PROJ #: JE1107	ENG:	DATE:	SCALE: 0.250		REV: C
PROJ: MODEL EE201	MGR:	DATE:	CAD: PFA/ENGINEER	SHEET: 2	OF 2