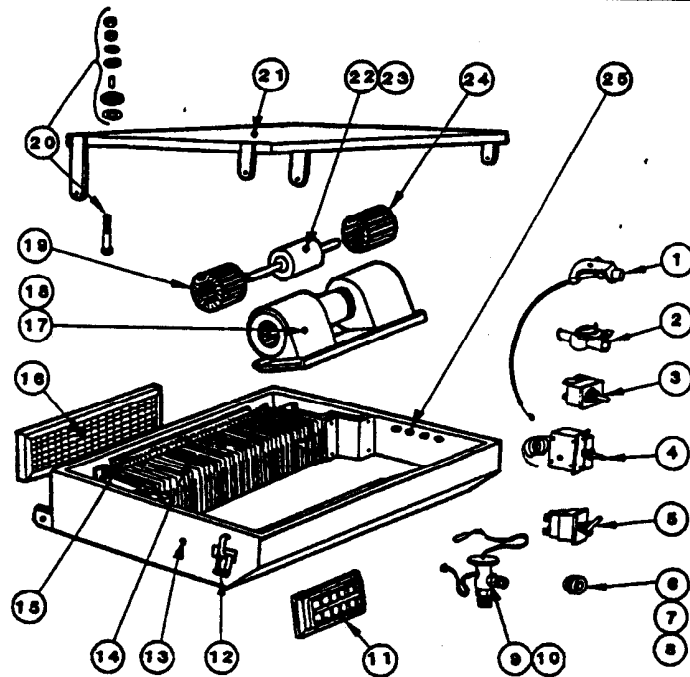


Model - 3270 Evaporator

Revised 07/93



A/C Only 500-295 & 500-299

A/C & Heat 500-811 & 500-812

ITEM	PART #	DESCRIPTION	ITEM	PART #	DESCRIPTION
1.	400-172	Heater Cable (Pull Type)	15.	400-605	Heater Coil
	420-066	Heater Cable (Turn Type)	16.	400-541	Filter
2.	400-449	Heater Valve	17.	Replaced by 502-589 502-589	Blower Assembly - 12V (3.5" Diameter Motor) Blower Assembly - 12V (3" Diameter Motor)
3.	400-093	Fan Switch	18.	Replaced by 501-911 501-911	Blower Assembly - 24V (3.5" Diameter Motor) Blower Assembly - 24V (3" Diameter Motor)
4.	402-284	Temp. Switch	19.	502-587	Blower Wheel
5.	400-171	Toggle Switch	20.	402-475	Shock Mount Kit (Set of 4)
6.	400-091	Air Knob	21.	501-602	Cover Assembly (With Foam)
7.	400-014	Temp. Knob		200-532	Cover (Only)
8.	400-014	Temp. Knob	22.	401-195	Motor - 12V (3.5" Dia.)
9.	401-894	Expansion Valve (O - Ring Type)		450-514	Motor - 12V (3" Dia.)
10.	400-001	Expansion Valve (Flare Type)	23.	401-196	Motor - 24V (3.5" Dia.)
11.	404-802	Louver		404-042	Motor - 24V (3" Dia.)
12.	400-212	Latch	24.	502-587	Blower Wheel
13.	200-544	Housing	25.	400-445	Terminal Bushing
14.	501-050	Coil Assembly (Includes Coil & Valve)			
	400-544	Evaporator Coil (O - Ring Fittings)			

Revision A